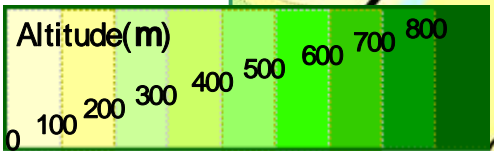
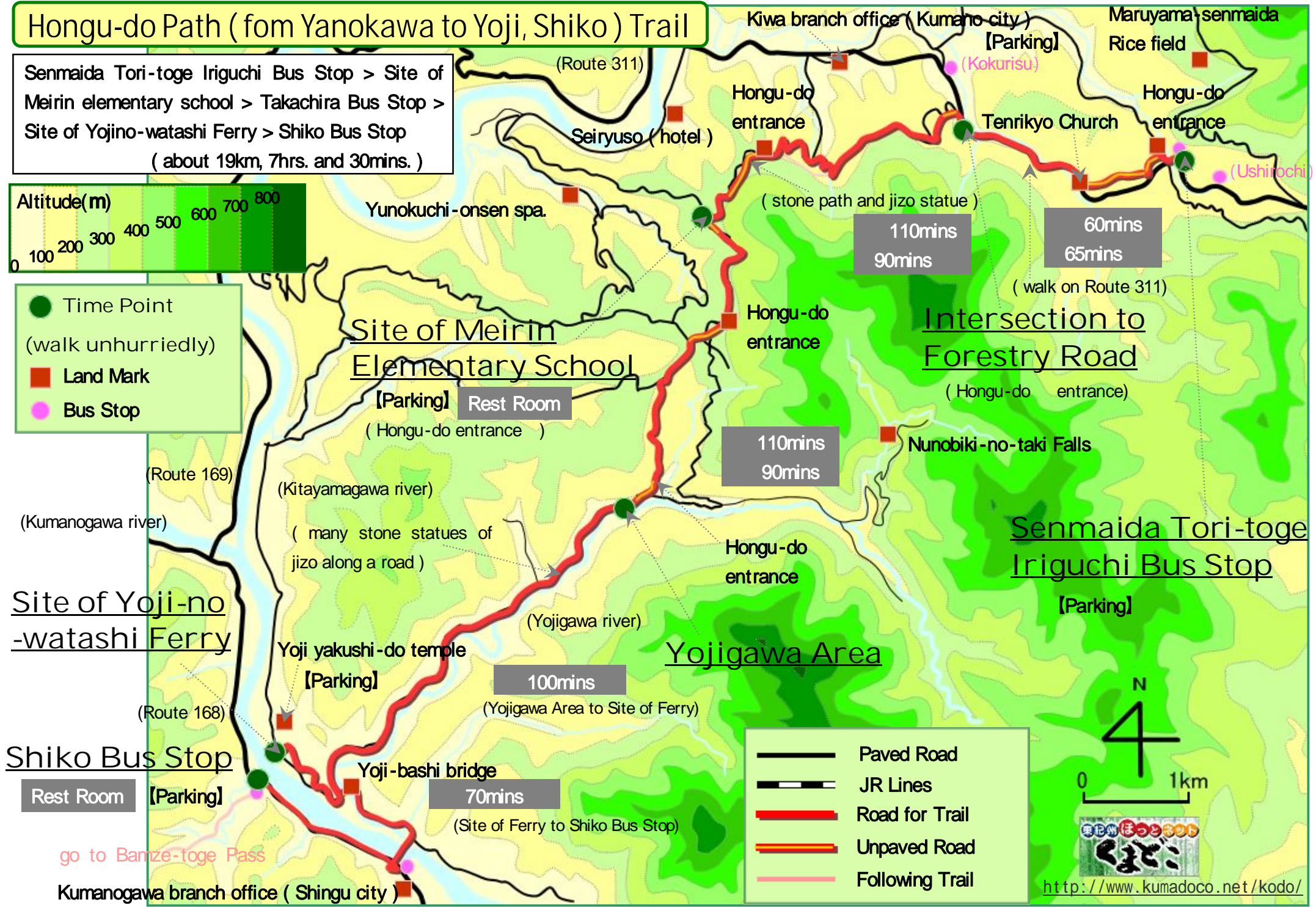


# Hongu-do Path ( from Yanokawa to Yoji, Shiko ) Trail

Senmaida Tori-toge Iriguchi Bus Stop > Site of Meirin elementary school > Takachira Bus Stop > Site of Yojino-watashi Ferry > Shiko Bus Stop  
 ( about 19km, 7hrs. and 30mins. )



- Time Point  
(walk unhurriedly)
- Land Mark
- Bus Stop

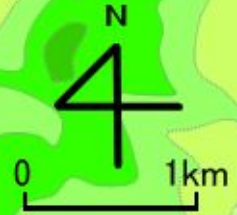


Intersection to Forestry Road  
 ( Hongu-do entrance )

Senmaida Tori-toge Iriguchi Bus Stop  
 [Parking]

Yojigawa Area

- Paved Road
- JR Lines
- Road for Trail
- Unpaved Road
- Following Trail



go to Banze-toge Pass

Kumanogawa branch office ( Shingu city )

## Summary

**Senmaida Toritoge Iriguchi Bus Stop** >>> (almost even, paved and unpaved road, 60mins.) >>>

**Intersection to Forestry Road** >>>> (uphill, paved and unpaved road, 110mins.) >>>>

**Site of Meirin Elementary School** >>>> (downhill, paved and unpaved road, 90mins.) >>>>

**Yojigawa Area** >>>> (slight downhill, paved road, 85mins.) >>>>

**Yoji-bashi Bridge** >>>> (even, paved road, 15mins.) >>>>

**Site of Yojino-watashi Ferry (Yoji Yakushi-do)** >>>> (even, paved road, 15mins.) >>>>

**Yoji-bashi Bridge** >>>> (even, paved road, 70mins.) >>>>

**Shiko Bus Stop**

## Transportation

**Nagoya Station** >> (2hrs. and 50mins. by JR line, Nanki-express) >> **Kumanoshi Station**  
>> (40mins by Bus, Kumanokodo-Seiryuso line) >> **Senmaida-Toritoge-Iriguchi Bus Stop**

**Nagoya Station** >> (3hrs. and 10mins. by JR line, Nanki-express) >> **Shingu Station**  
>> (60mins by Bus, some lines by Kumanokotsu Co., Ltd.) >> **Shiko Bus Stop**

【by car】

**Nagoya** >> (Highway & Route 42 / 3hrs. and 30mins.) >> **Kumanoshi Station**  
>> (Route 42 & Route311 / 40mins.) >> **Senmaida-Toritoge-Iriguchi Bus Stop**

>> (Route 311 & 169 / 50mins.) >> **Shiko Bus Stop**

**Nagoya** >> (Highway & Route 42 / 4hrs. and 30mins.) >> **Hayatama-taisha Shrine**  
>> (Route 168 / 50mins.) >> **Shiko Bus Stop**